



Antonine
Shopping
Cumbernauld

Cumbernauld's Leading
Retail Destination



TJ HUGHES

32,000sq.ft



Facts & Figures...

Source:
PRAGMA CONSULTING

Cumbernauld:

- Cumbernauld is the largest town in North Lanarkshire with a principal catchment population of approx. 163,000 persons.
- 30% of residents are family households.
- Empty nesters comprise largest lifestyle group at 33% of population.
- Principal catchment has higher than average national penetration at 32%, well above average at 13%.
- Key employers include IBM, Scottish and Southern Energy, Farmfoods and Fujitsu.
- 12,200 workers within 10 minute walk of town centre.
- 1,400 students at adjacent college.

Antonine Shopping Centre Footfall 110,000 per week approx:

- 205,000 sq ft of enclosed retail space
- 42 retail units
- 1,000 free car parking spaces

Some of our brands:

TESCO
extra

next



Warren James



RIVER ISLAND

BarrheadTravel
The Low Cost Travel Provider

REGIS

TIMPSON
Great Service by Great People



SUBWAY

GREGGS



HOLLAND & BARRETT

T.K.maxx



Card
Factory

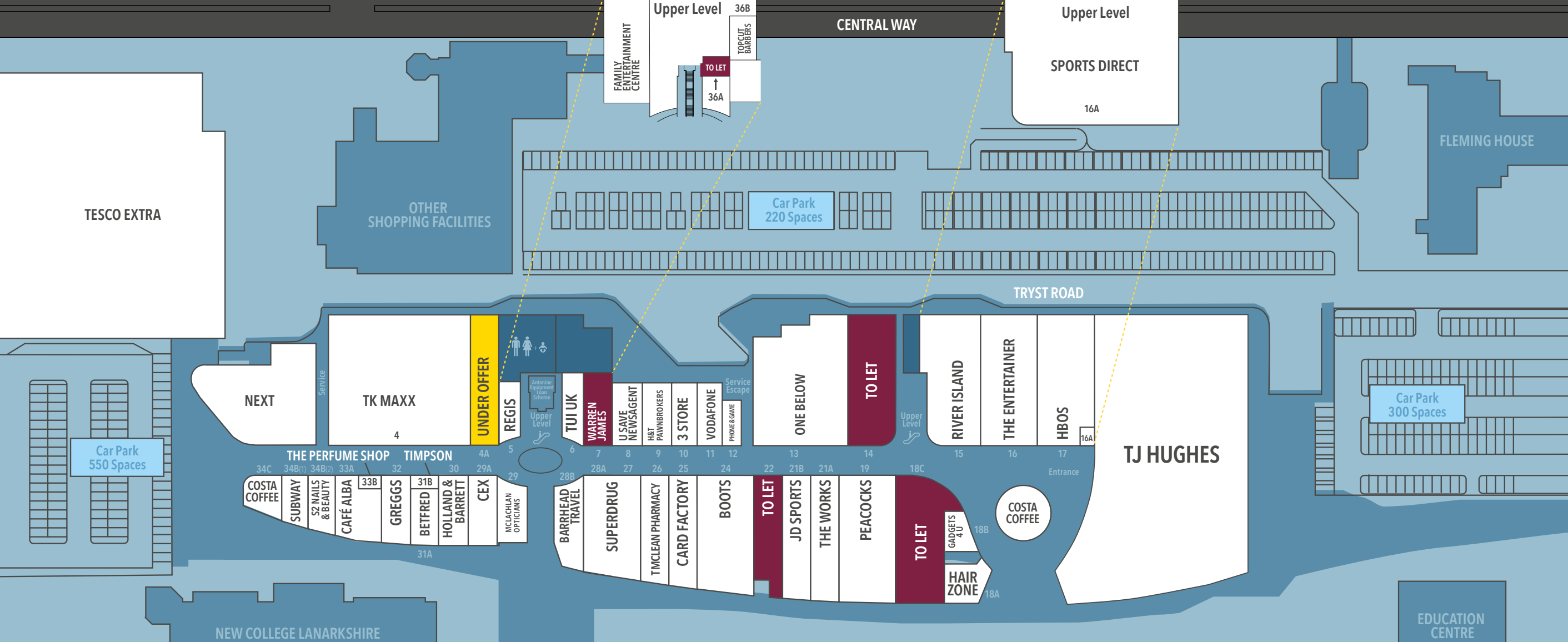
The Works

Superdrug



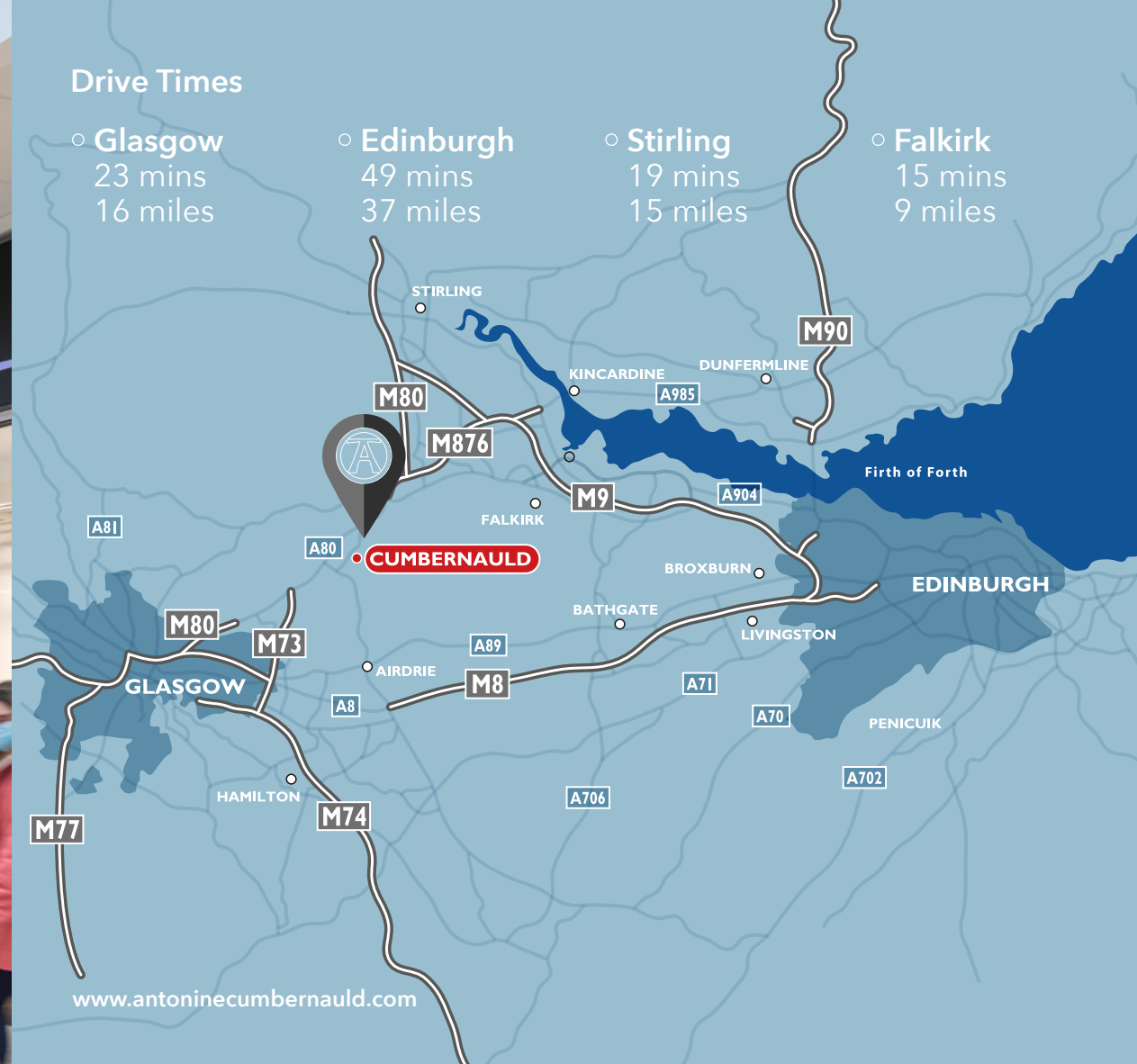
BETFRED





Available Units

UNIT	SIZE	RENT PA	SERVICE CHARGE PA	RATES PAYABLE 2021 PA (Tenant to confirm with local assessor)
4A	1876 sq.ft	£45,000	£12,075	£9,000 estimate
14	G - 5400 sq.ft F - 4555 sq.ft	Rent on Application	£64,674	£26,565
18c	5470sq.ft	Rent on Application	£38,787	£21,200
22	2343 sq.ft	£50,000	£16,616	£11,040
36A	215 sq.ft	£5,000	£1,551	TBC
7	1,562 sq ft	£35,000	£11,241	£10,333



For further information please contact the joint letting agents.



Stephen Gunn
 stephen@gunnproperty.co.uk
 0141 221 3500



Ross Wilkie
 ross.wilkie@colliers.com
 0141 226 1075



Antonine
 Shopping | Cumbernauld

Misrepresentation Act.

These particulars do not constitute an offer or contract and although they are believed to be correct, their accuracy cannot be guaranteed. Neither the Developers nor their agents can be held responsible for any error, omission or mis-statement in these particulars. Photographs are for indicative purposes only. August 2020.